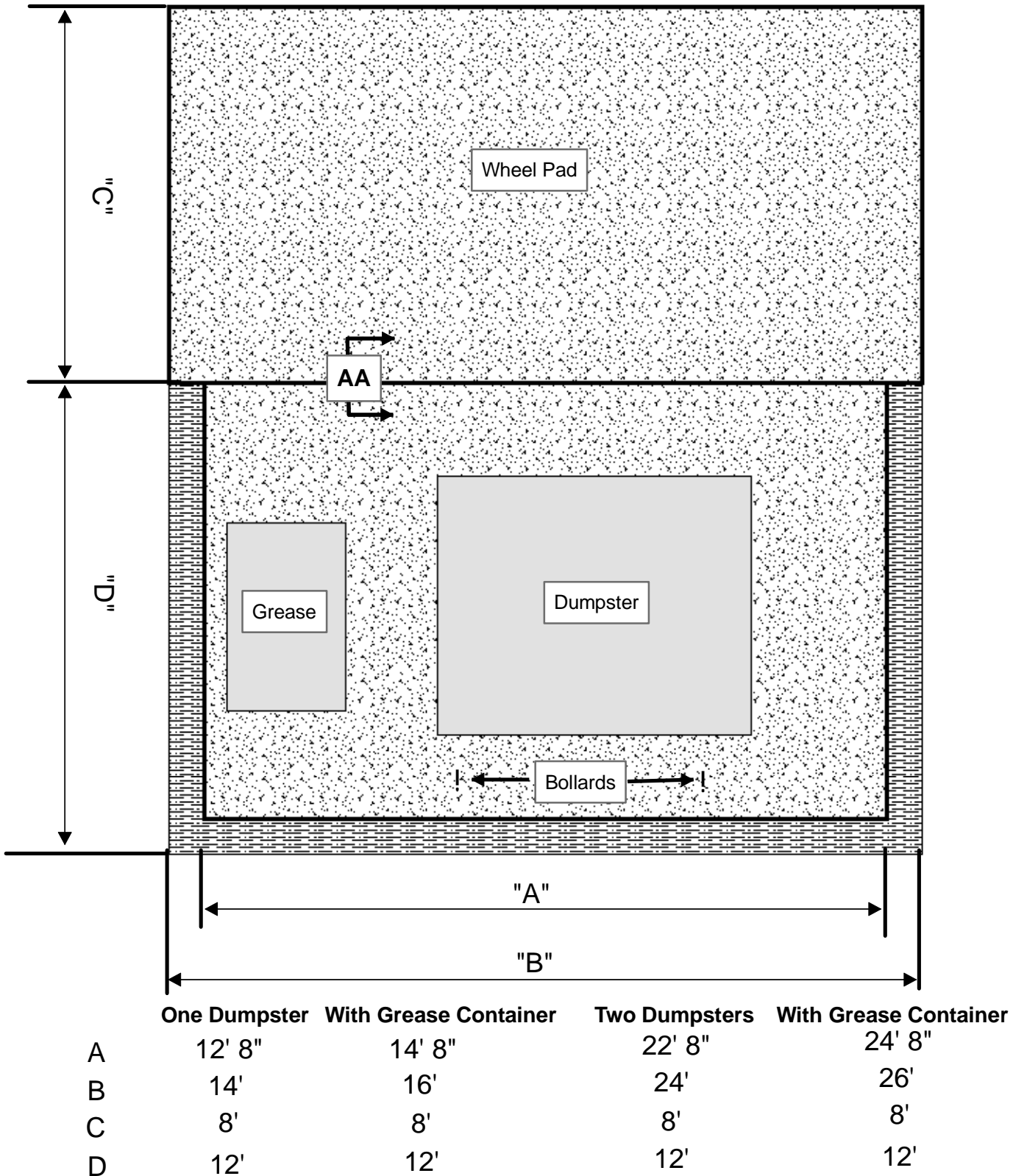


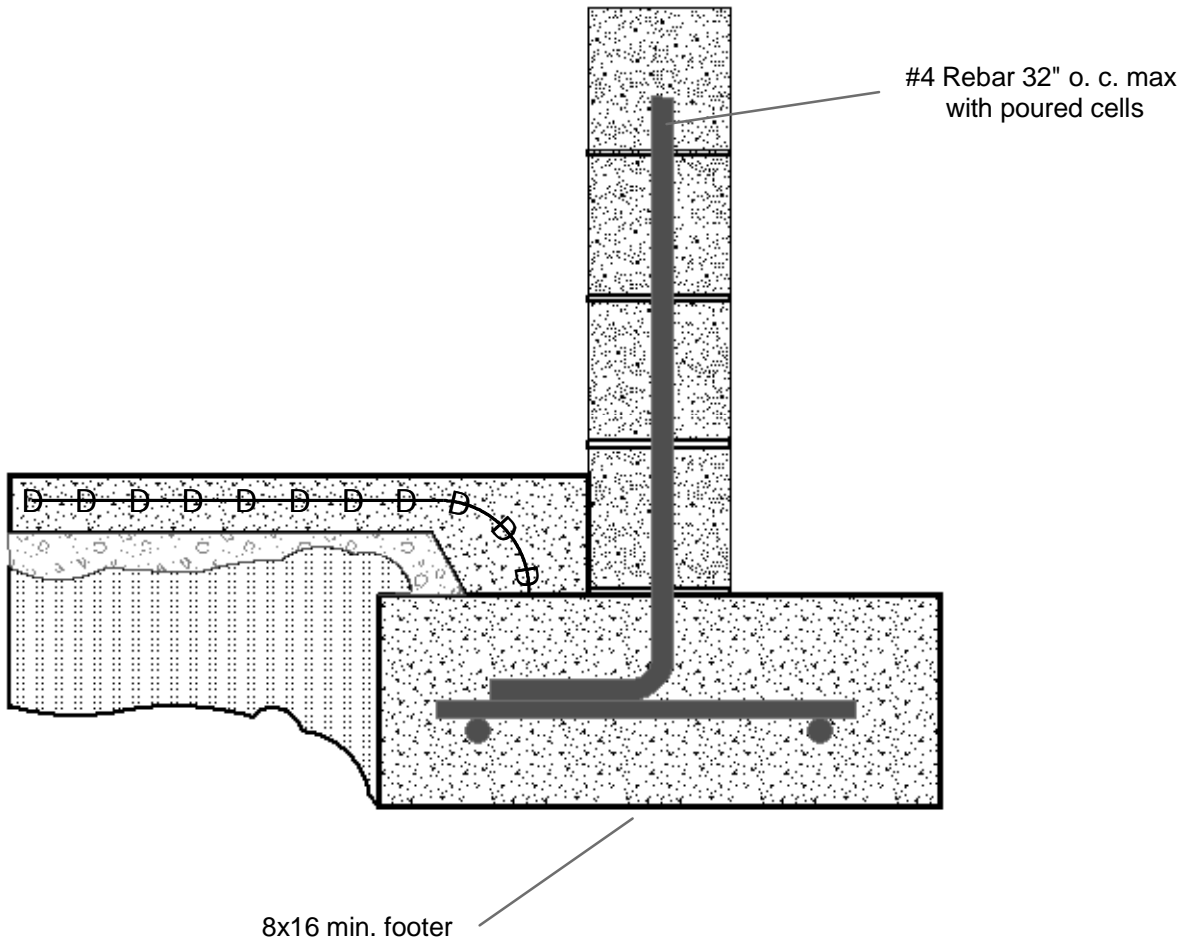
# City of Pigeon Forge Sanitation Dept.

## Dumpster Enclosure Specifications Details

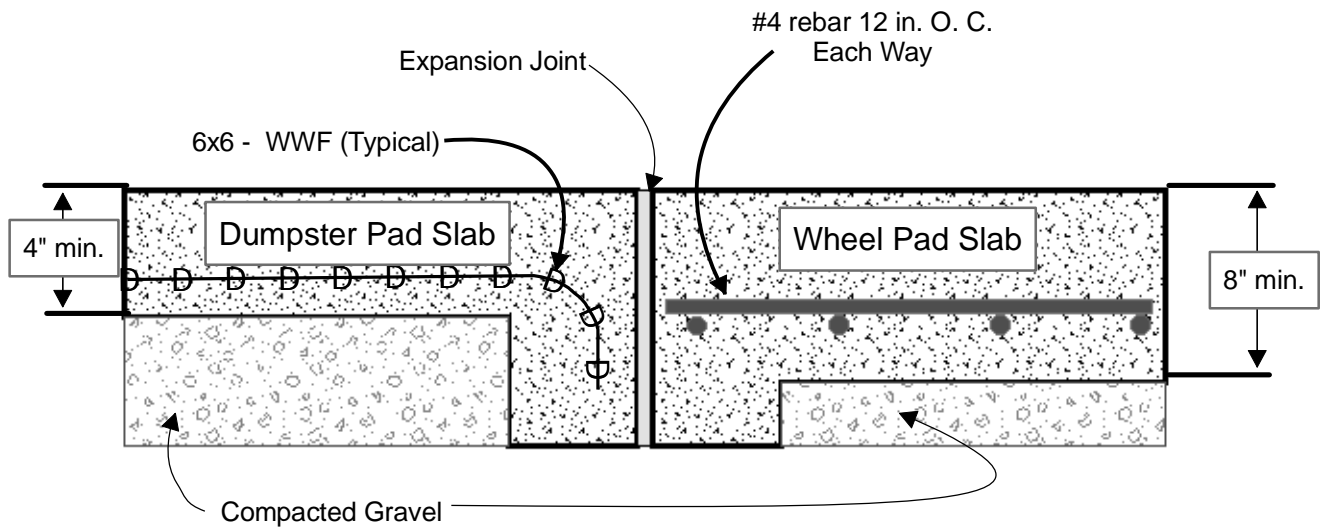


Note: If dumpster pad is gated, gates must open at least 180 degrees and have a locking mechanism while maintaining the dimensions above

City of Pigeon Forge  
Sanitation Dept.  
Dumpster Enclosure Specifications  
Details

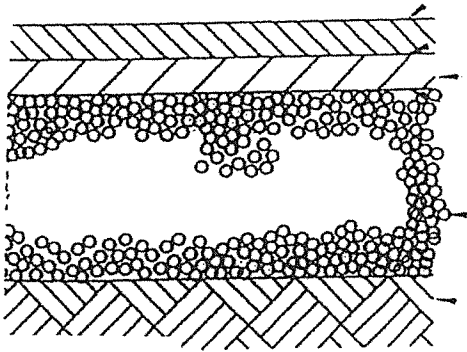


City of Pigeon Forge  
Sanitation Dept.  
Dumpster Enclosure Specifications  
Details



Section AA

## HEAVY DUTY PAVEMENT SECTION



1-1/2" ASPHALTIC CONCRETE  
WEARING COURSE

TACK COAT

2" ASPHALTIC CONCRETE BINDER COURSE

PRIME COAT

6" COMPACTED AGGREGATE BASE

TOP 12" OF COMPACTED FILL OR  
RECOMPACTED CUT