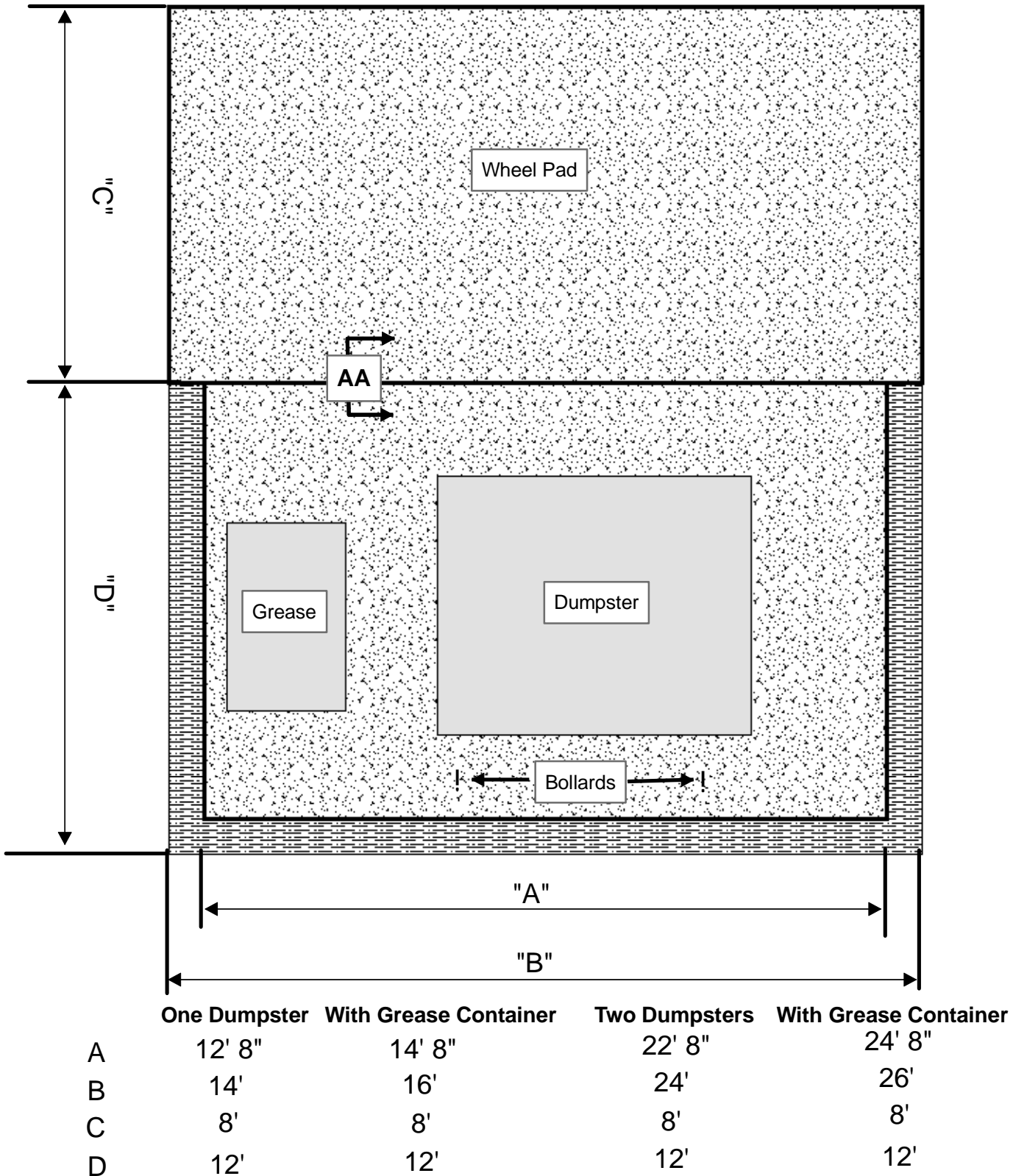


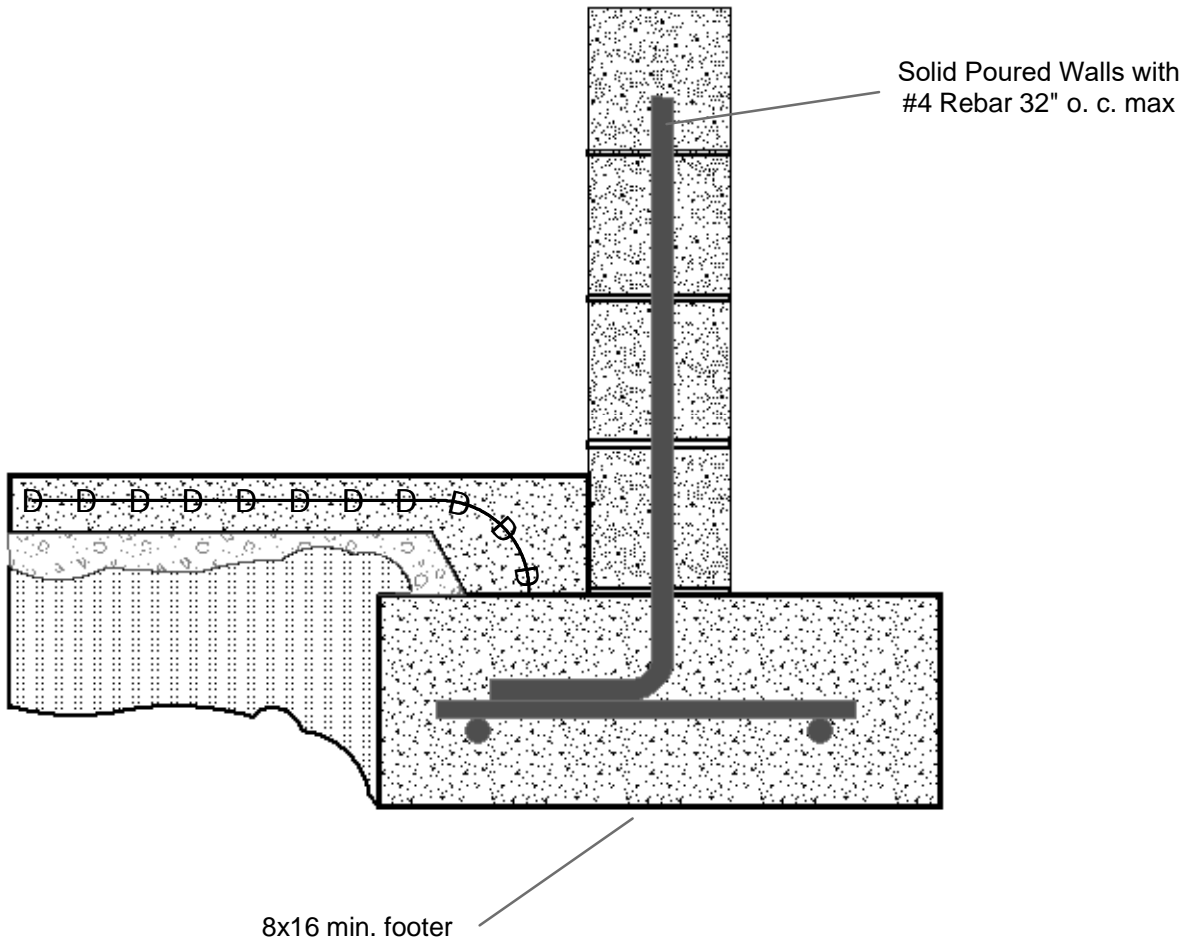
City of Pigeon Forge Sanitation Dept.

Dumpster Enclosure Specifications Details

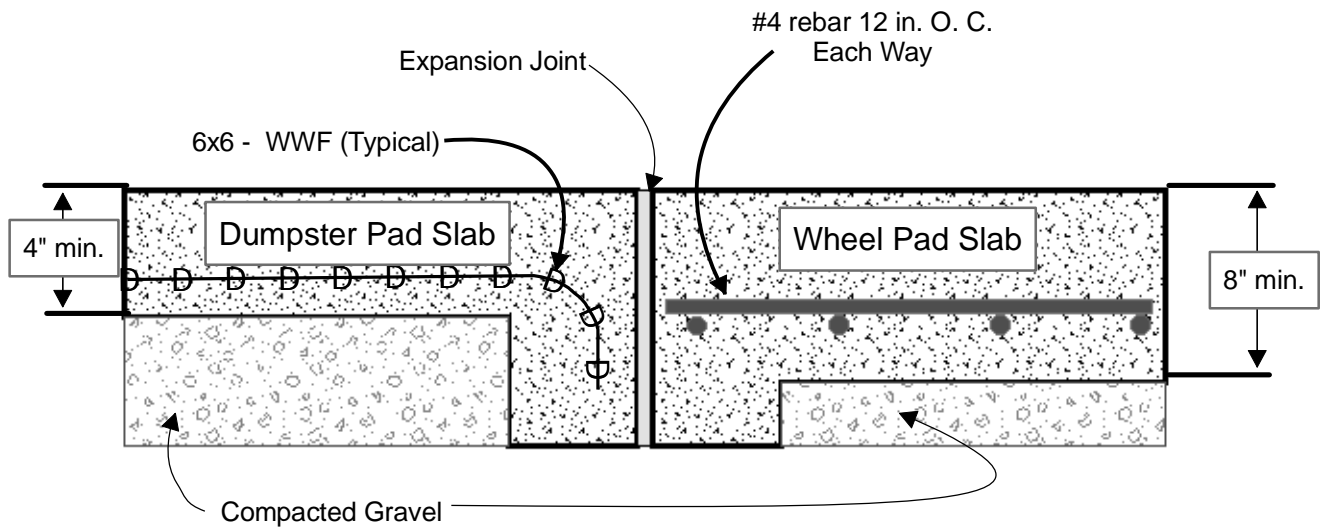


Note: If dumpster pad is gated, gates must open at least 180 degrees and have a locking mechanism while maintaining the dimensions above

City of Pigeon Forge
Sanitation Dept.
Dumpster Enclosure Specifications
Details

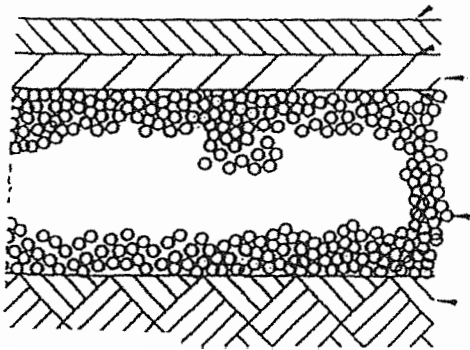


City of Pigeon Forge
Sanitation Dept.
Dumpster Enclosure Specifications
Details



Section AA

HEAVY DUTY PAVEMENT SECTION



1-1/2" ASPHALTIC CONCRETE
WEARING COURSE

TACK COAT

2" ASPHALTIC CONCRETE BINDER COURSE

PRIME COAT

6" COMPACTED AGGREGATE BASE

TOP 12" OF COMPACTED FILL OR
RECOMPACTED CUT